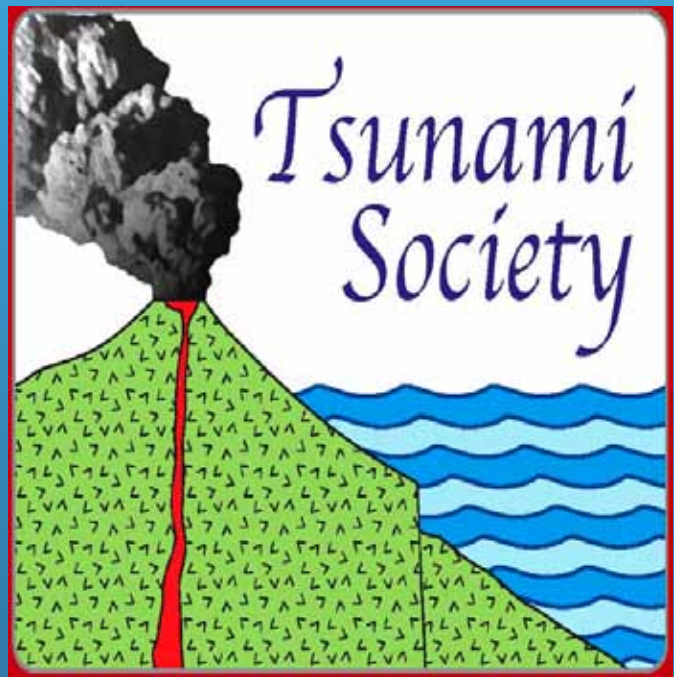


2nd Announcement

***5TH International Tsunami
Symposium***

**Tsunami Society International
3-5 September 2012**

ISPRA 2012 – ITALY



Hosted by



Joint Research Centre
Ispra, Italy



Call for Abstracts & Papers

You are invited to submit an abstract of a paper for an oral presentation at the 5th International Symposium of Tsunami Society International - to be held at the European Commission's Joint Research Centre (JRC) at Ispra, Northern Italy (near Milan). Upon acceptance of your abstract, you will be invited to submit a full paper for inclusion in the Symposium Proceedings.

Theme - 5th International Tsunami Symposium

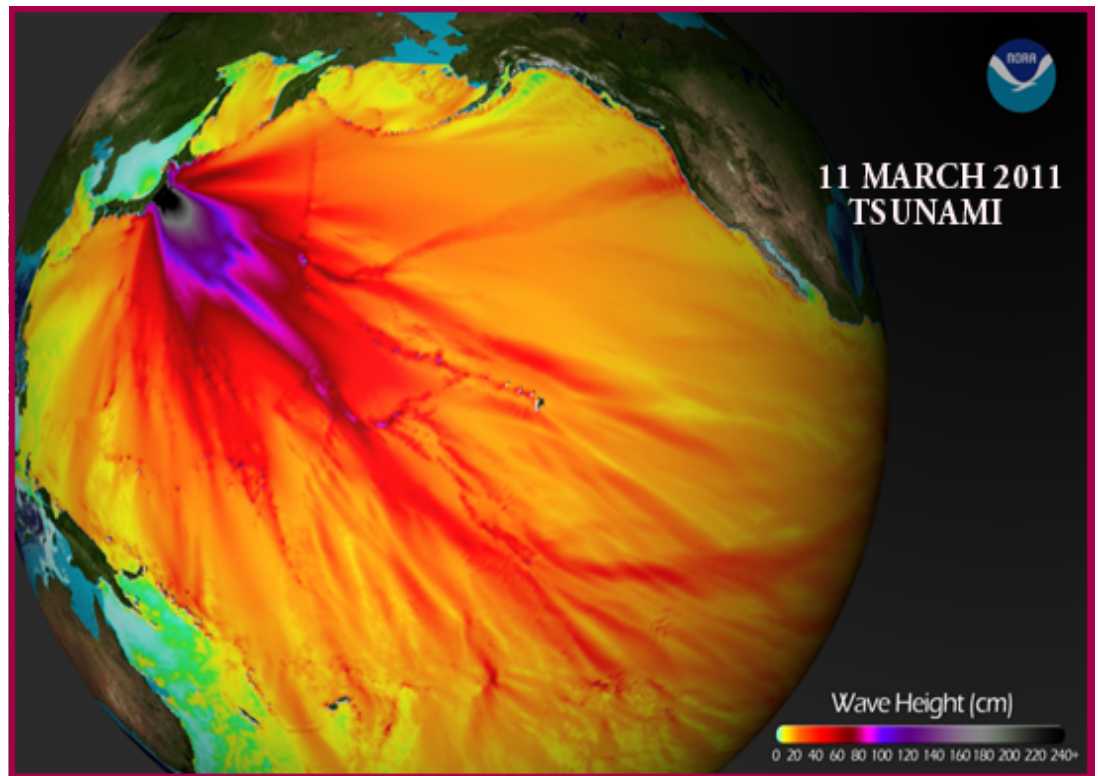
Integrative multidisciplinary approach in assessing tsunami hazards, in determining relative risks, in developing mitigation strategies for vulnerable regions and in establishing programs of public education and preparedness.

Deadline for Paper and Abstract Submission

Please submit your abstract (max. 300 words) of your proposed presentation to: postmaster@tsunamisociety.org with a copy to drgeorgepc@yahoo.com

Upon acceptance of your abstract by Tsunami Society International, please submit to the above given emails, a full paper in accordance to the prescribed format as it will be provided at the Society's website: <http://tsunamisociety.org>

The deadline for the submission of abstracts to Tsunami Society International has been extended to 15 June 2012 (Earlier submissions will be appreciated). The deadline for submissions of full, accepted papers (page limit up to 20) is 15 July, 2012. (See paper submission specifications at <http://www.tsunamisociety.org>)



TSUNAMI SYMPOSIUM TECHNICAL PROGRAM

Although the Tsunami Symposium program has not been finalized, it is anticipated that it will include the following general sessions:

- Numerical Modeling
- Tsunami Preparedness
- Tsunami Instrumentation
- Experimental Modeling
- Landslide Generated Tsunamis
- Asteroid Generated Tsunamis
- Tsunami Source Mechanisms
- Risk Analysis
- Tsunami Engineering
- Historical Tsunamis
- General Session

Relevant Tsunami Symposium Topics:

Evaluation of the Tsunami Hazard / Risk Analysis.

- Methods of Tsunami Risk Assessment
- Historical Studies of Tsunamis
- Tsunami Hazard Frequency
- Height/Frequency Relationships
- Recurrence Frequencies
- Acceptability of Risk

The Great Earthquakes of April 11, 2012 in Indonesia

Surveys and Research Findings

Geotectonics of the Australian/Indian plates

Reasons for small tsunami generation

The Great Earthquake and Tsunami of March 11, 2011 in Japan

Surveys and Research Findings - The Fukushima Daichi Nuclear Disaster

Tsunami Engineering Considerations for Critical Infrastructure Facilities

The Great Chile Earthquake and Tsunami of February 27, 2010

The Great Samoa Earthquake and Tsunami of September 29, 2009

Tsunami Modeling Studies

Hazard Modeling

Hydraulic Scale Modeling Studies

Numerical Modeling

Zonation of the Tsunami Hazard

Assessment of Socioeconomic Vulnerabilities and Impacts

Infrastructure Development in the Coastal Zone/Land Use and Public Policy

Preparedness and Planning

Tsunami Hazard Management

Tsunami Warning Systems

Public Safety

Protection of Property and Infrastructure

Protection from Collateral and Health Impacts

Post-disaster Recovery

SPECIAL SESSION 1 - 2011 Tsunamigenic Tohoku earthquake; 2012 Sumatra quakes

Lessons learned from the recent tsunami disaster of March 11, 2011 in Japan and the two great strike/slip earthquakes of April 11, 2012, off the coast of Sumatra will be key issues of discussion in developing strategies and synergies needed for further action by the international community to develop plans for comprehensive tsunami risk assessment and effective tsunami disaster management.



SPECIAL SESSION 2 - Tsunami Safety of Nuclear Power Plants

The JRC is an appropriate facility for the Tsunami Symposium's special session on the tsunami safety issues of nuclear power plants, as it was originally a nuclear research centre. Experts from the JRC are invited to contribute to the discussions. Additionally, Tsunami Society International has invited experts familiar with the lessons learned from the nuclear power plant accidents and disasters (Fukushima Daichi 2011; Tamil Nandu 2004; Chernobyl 1983, etc).

Oral Presentations

Oral presentations will be part of the above listed thematic sub sessions to be held over a three day period (Monday, September 3- Wednesday, September 5, 2012).

Review Criteria for Acceptance Of Papers

1. Scientific quality and originality
2. Relevance to tsunami research and to tsunami disaster risk assessment
3. Generation of new ideas or concepts for tsunami disaster management and mitigation.
4. Proper syntax, grammar and clarity of figures (some editing for proper English may be provided).

Paper Format

A link for instructions and a template for proper paper formatting will be provided at the portal page of Tsunami Society International website at <http://www.tsunamisociety.org>

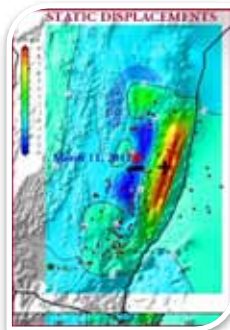
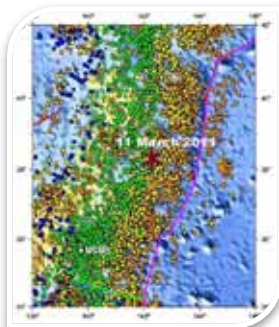
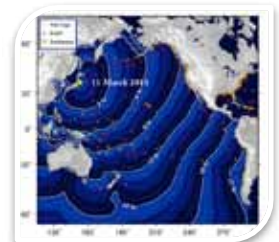
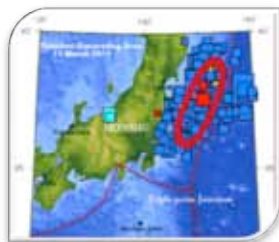
ABOUT THE HOSTING INSTITUTION

European Commission's Joint Research Centre (JRC)

The Joint Research Centre (JRC) is the European Commission's in-house science service. Its mission is to provide customer-driven scientific and technical support for the conception, development, implementation and monitoring of European Union policies. The JRC serves the common interest of the Member States, while being independent of special interests, whether private or national.

The JRC has seven scientific institutes, located at five different sites in Belgium, Germany, the Netherlands, Spain and Italy, with a wide range of laboratories and unique research facilities. The largest JRC site is located in Italy in Ispra, near Milan in a very beautiful area on the east coast of the Lake Maggiore in Northern Italy (see map for access).

Through its Institute for the Protection and Security of the Citizen (IPSC) the JRC develops methods and technologies in support to crisis management operations. In this context, in 2011 the JRC hosted the Workshop "Tsunami Hazard in the NEAM Region - A Challenge for Science and Civil Protection" organized by UNESCO in collaboration with the JRC.



The European Crisis Management Laboratory

The European Crisis Management Laboratory, a Crisis Room model, was inaugurated on March 16, 2012 at the Joint Research Centre with the President of the European Commission attending. The Laboratory acts as a research, development and test facility for ICT focused solutions which integrate devices, applications, and crisis management related to information sources to support crisis management needs, such as threats analysis, common situation awareness, and collaborative decision making.

The Laboratory also allows distributed crisis management training across relevant services of the European Commission, as well as with partners in the EU Member States and others engaged in crisis management, thereby enhancing their awareness and confidence in the application of technological solutions to strengthen their functions in crisis management.

The Laboratory will be tested in the future in a variety of crisis scenarios ranging from intentional threats and natural disasters such as tsunamis, to health crises. The Laboratory has a central role during real emergencies when the analysis of complex events requires the use of several software components to give a unique picture of the ongoing events.

On Friday 16 March, 2012 the President of the European Commission José Manuel Barroso accompanied by the European Commissioner for Research, Innovation and



Science, Máire Geoghegan-Quinn inaugurated the new European Crisis Management Laboratory (ECML) which supports EU's interventions in areas struck by disaster around the globe. The new facility is equipped with state-of-the-art information technologies, providing a dynamic situational awareness for crisis and disaster preparedness and response on any location or event in the world.

inauguration speech at the European Crisis Management Laboratory (ECML)

President Barroso delivers the

5th Tsunami Symposium participants will have the opportunity to visit the European Crisis Management Laboratory at the JRC.





The European Crisis Management Laboratory is managed by scientists at the JRC Institute for the Protection and Security of the Citizen



General view of the European Crisis Management Laboratory

SYMPOSIUM LOGISTICS

Registration

Preregistration for the 5th International Tsunami Symposium (ISPRA-2012) must be made upon submittal of papers by 15 July 2012 or before by contacting Tsunami Society International at postmaster@tsunamisociety.org. Final registration can be made subsequently through Tsunami Society International by contacting postmaster@tsunamisociety.org or between 8-9 AM (Monday morning, September 3, 2012) at a registration desk of the Symposium at the European Commission Joint Research Centre. The registration fee is discounted for members of the Tsunami Society International.

Submission of Papers (pre-registration) and Registration Fees

Tsunami Society International Members: 375 Euros

Non-Members: 425 Euros

Students 230 Euros

A Tsunami Society membership/publication form (available at the Society website) may be used to record name(s) of author(s) and title of the paper as well as the form of payment for either the publication fee or for final registration.

At the time of submission of an approved paper, a publication fee of 125 euros must be paid. In case of non-attendance, this fee is not refundable. The publication Fee will be deducted from the Registration fee of those attending. All payments in euros or in equivalent US Dollars may be paid to Tsunami Society by Credit Card or through Paypal by crediting the Tsunami Society account: postmaster@tsunamisociety.org

A Tsunami Society membership/publication form (available at the Society website) may be used to record name(s) of author(s) and title of the paper as well as the form of payment for either the publication fee or for final registration.

Registration with JRC for Security Clearance

"In order to access the JRC Ispra site, all Tsunami Symposium participants need to register at a dedicated website at least four (4) weeks before the Tsunami Symposium - specifically no later than August 3, 2012. The address of the registration application is

<https://jrc-meeting-registration.jrc.ec.europa.eu>

Participants need to create an account, select "Ispra" and then "September" in the top menu, then select the 5th Tsunami Symposium (is not yet present, it will be in few days), fill their data. Also they have to indicate their transport and accommodation needs.

Proceedings

Tsunami Society International will handle the collections of abstracts, preregistration at the time full papers are submitted and final registration of participants on Monday morning (Between 8-9 AM), September 3, 2012 at the entrance to the Ampitheatre of JRC

Venue of Tsunami Symposium

The 3-day Tsunami Symposium will be held at the Amphitheatre of JRC at Ispra. The Amphitheater can accommodate 101 participants + a chair table for 6 persons, and is equipped with WiFi and microphones on the table, plus a lavalier - and handheld wireless microphone. The content of the symposium will be live streamed and the recordings stored.

Visas

Tsunami Symposium participants with EU passports do not need to obtain an entry visa for Italy. Participants with other than EU passports may or may not need a Visa. However, if a Visa is required, please let Tsunami Society International know so that we can provide a letter of invitation to

facilitate its issuance. Sometimes, Visa applications may take time due to security reasons. In addition, the Schengen Act requires that when one EU Member state is asked for a Visa, it is like all of the EU members states are being asked - therefore Italy will have to notify all the member states of the Schengen area. This means that the participants will have to apply quite in advance for their Visas (if needed) - thus you are being urged to apply as early as possible and at least six weeks before the 5th International Tsunami Symposium.

Travel

The closest airport to the EC-JRC is Milan's Malpensa. The distance from the Malpensa Milan Airport to Ispra is 30 km (40 min.)

Local Transportation

JRC will offer free of charge, transportation to Tsunami Symposium participants from the Malpensa, Milan Airport to their hotels. Also free of charge transportation will be provided to and from the hotels to the Symposium site. Additionally, free of charge transportation will be provided to participants and their spouses by bus and across lake Maggiore to a restaurant for a group dinner, tentatively scheduled for Tuesday evening, September 4.

Arriving by car: For all directions it is recommended that you follow the Autostrada Laghi (A8). After leaving the highway (exit: Sesto Calende, Laveno) follow the Superstrada towards Besozzo and Laveno. When on the Superstrada, turn left at the seventh traffic light (after 7km) towards Cadrezzate and Ispra and follow the traffic signs for CCR (Centro Comune di Ricerca). After some narrow curves, the road will get you right to the Centre entrance.

Arriving by plane: Milan has 2 international airports: Linate and Malpensa. Allow at least one hour of travel time from Linate and 30 minutes from Malpensa. In both cases - the quickest option in getting to the Centre - is to rent a car.

Arriving by train: The major train stations are Milano Centrale and Arona. In both cases - the quickest option in getting to the Centre - is to rent a car.

Transport

All Transports between Malpensa Airport (Milan) - Hotel(s) - Joint Research Centre will be handled (free of charge) by the JRC transport service for participants registered with Tsunami Society International (attending the 5th Tsunami Symposium). Upon reception of the participants' travel plans, bus shuttle will be arranged from Malpensa (Milano)-Airport to the workshop Hotel(s) and to the JRC which will contract the service with the provider and it is not known yet if there will be 1 large bus or several small buses. Transportation will also be arranged every day between the hotels and the JRC. A schedule will be provided to participants.

Hotel Accomodations

A block of 72 rooms have been reserved by JRC for the 5th Tsunami Symposium participants and their spouses, at the following hotels in Ispra and vicinity. Hotel names and prices are shown below. Please indicate your preference at the time of pre-registration with Tsunami Society International. More information on the hotels below can be found on the Internet. Free of charge transportation from the hotels to the JRC will be provided.

Hotel Belvedere	8 rooms (single 80 €/night/Double 120€/night)
Hotel Conca Azzurra	20 rooms (single 78 €/night (normal), 95 €/night (lake view) double 100 €/night to 125 €/night (lake view)
Hotel Pavone	14 rooms (single 85 €/night; Double 130€/night)
Hotel dei Tigli	30 rooms (single 95 €/night; Double 120€/night)

Represented Institutions and Organizations at the 5th International Tsunami Symposium

As of April 16, 2012, abstracts were received by authors representing the following countries, Institutions and organizations:

ALGERIA

USTHB-FSTGAT

AZERBAIJAN

State University of Azerbaijan

CANADA

Dept of Civil Engineering, University of Ottawa, Ottawa.

GERMANY

German Remote Sensing Data Center (DFD), German Aerospace Center (DLR), 82234 Wessling.

Berlin University of Technology (TU), Institute of Applied Geosciences, Leichtweiss-Institute for Hydraulic Engineering and Water Resources, Technische Universität Braunschweig, Germany.

German Research Centre for Geoscience GFZ

EGLIPTik

INDIA

Centre for Earth Science Studies, Thiruvananthapuram

Centre for Mathematical Modelling and Computer Simulation, Bangalore

Kerala State Memorial Tsunami Museum

INDONESIA

Ministry of Marine Affairs and Fisheries (KKP), Jakarta.

GIZ International Services, Jakarta.

ITALY

Dipartimento di Scienze della Terra e Geoambientali, Università degli Studi di Bari.

Spin Off Accademico Environmental Surveys, Taranto.

Geo Data Service s.r.l., Taranto.

LaGAT-Ta, Laboratorio Gis geo-ambientale e di Telerilevamento, II Facoltà di Scienze MM. FF. NN., Università degli Studi di Bari, Taranto.

European Commission - Joint Research Center, Ispra, Italy

JAPAN

Hokkaido University, Sapporo.

Intelligent Computer Entertainment Laboratory, Dept of Human and Computer Intelligence, Ritsumeikan University

Disaster Control Research Center, Tohoku University, Sendai.

Earthquake Research Institute, Tokyo University.

Composed Crisis Research Institute, Waseda University.

Meiji University

KOREA

Sungkyunkwan University, Suwon.

Korea Ocean Research & Development Institute, Ansan.

NEW ZEALAND

National Institute of Water and Atmospheric Research, Christchurch.

National Institute of Water and Atmospheric Research, Wellington.

GNS Science.

PORTUGAL

Instituto de Meteorologia, IP, Lisboa.

Instituto Dom Luiz (IDL), Universidade de Lisboa, Lisbon.

Instituto Superior de Engenharia de Lisboa, Lisbon.

RUSSIA

Institute of Computational Technologies, SB RAS, Novosibirsk

Institute of Computational Mathematics and Mathematical Geophysics, SD RAS, Novosibirsk.

N. Novgorod State Technical University, Nizhny Novgorod.

P. P. Shirshov Institute of Oceanology RAS, Moscow.

Institute of Applied Physics, Nizhny Novgorod.

Institute of Marine Geology and Geophysics FEB RAS, Yuzhno-Sakhalinsk

Institute of Computational Technologies, SB RAS, Novosibirsk, Russia,

Sakhalin Tsunami Warning Center, Yuzhno-Sakhalinsk.

TURKEY

Boğaziçi University, Kandilli Observatory and Earthquake Research Institute, Istanbul.

Middle East Technical University, Civil Engineering Department, Ocean Engineering Research Center, Ankara.

Yildiz Technical University, Civil Engineering Faculty, Department of Geomatic Engineering, Istanbul.

USA

Doctors Response Force,

Moss Landing Marine Laboratories, Moss Landing.

Naval Research Laboratory, Stennis Space Center, MS.

University of Pittsburgh, Pittsburgh, PA,

Dept. of Math and Computer Science, University of Maryland.

University of Hawaii

Vassar College

Brahman Industries, LLC. St. Thomas, US Virgin Islands

5th International Tsunami Symposium

ISPRA - 2012

TSUNAMI SOCIETY INTERNATIONAL



Joint Research Centre

<http://www.jrc.ec.europa.eu>

email:

alessandro.annunziato@jrc.ec.europa.eu



TSUNAMI SOCIETY INTERNATIONAL

1741 Ala Moana Blvd. #70
HONOLULU, HAWAII 96815, USA

For more information contact

postmaster@tsunamisociety.org or drgeorgepc@yahoo.com

TSUNAMISOCIETY.ORG

